

# SUPPORTED EMPLOYMENT INITIATIVE

---

SAN DIEGO  
**WORKFORCE**  
**PARTNERSHIP**<sup>®</sup>



# Work Well Initiative



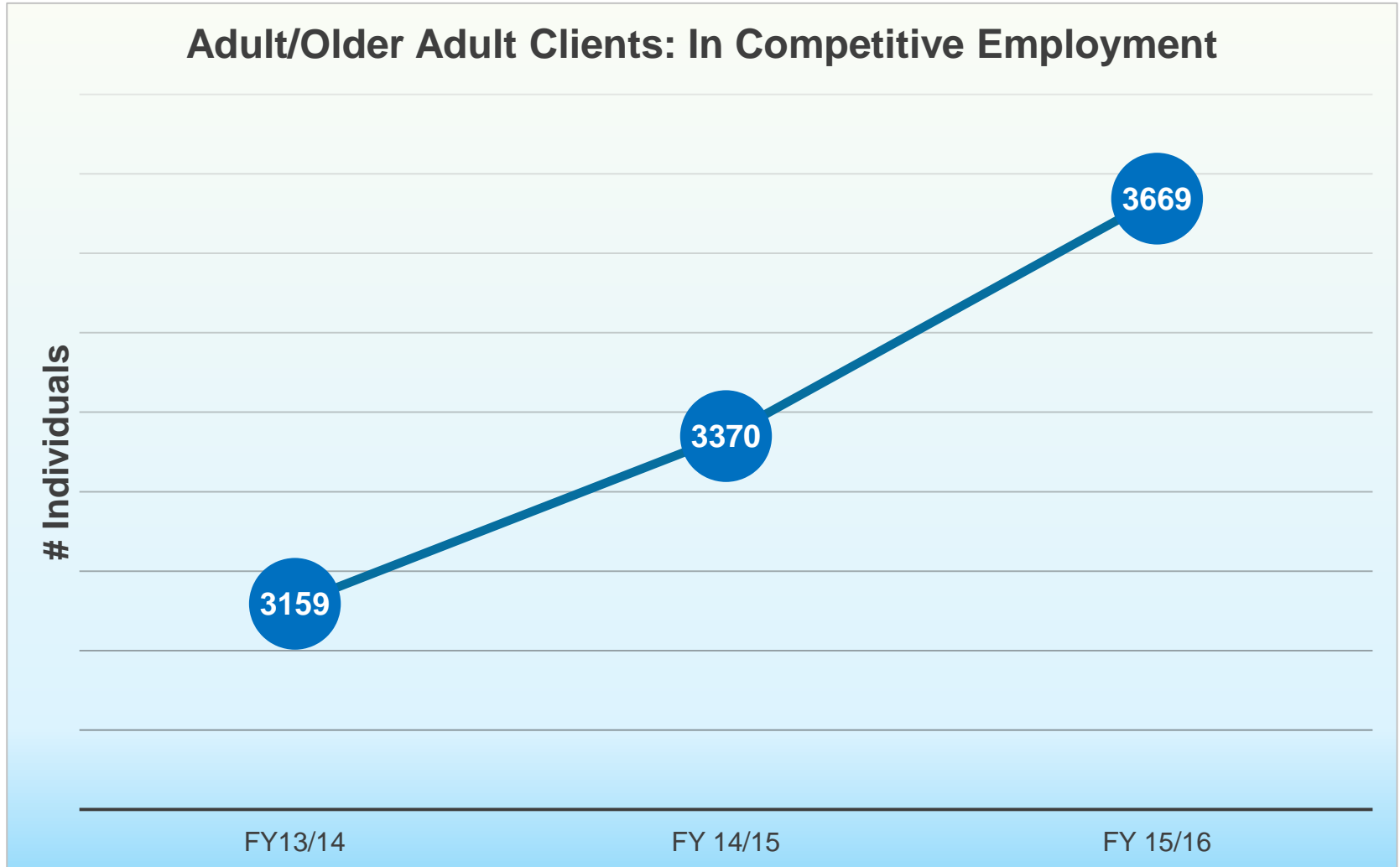
**JOIN US**

as we reduce the stigma  
surrounding mental illness  
and promote  
mental health awareness  
in the workplace.

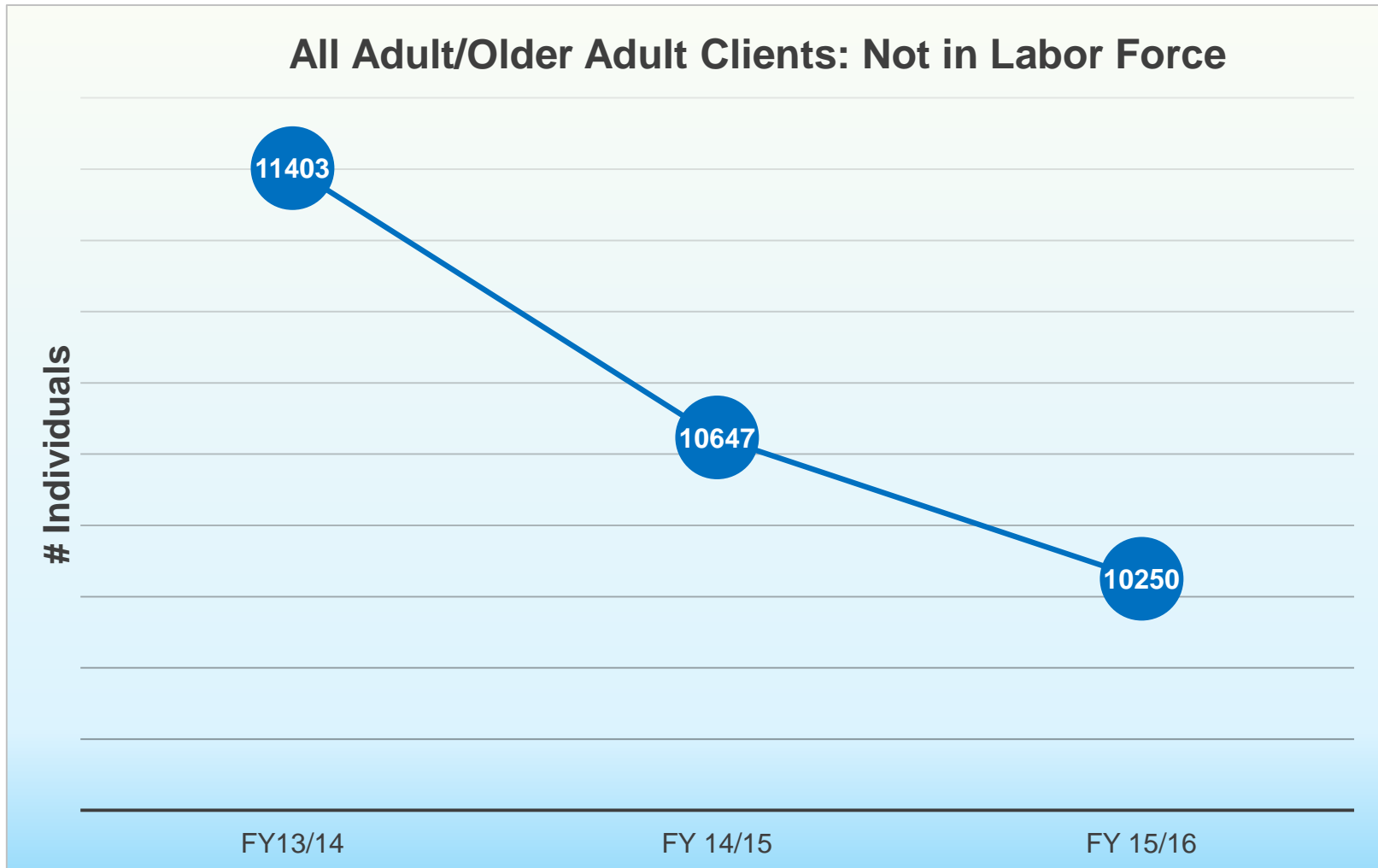
# Databook - Employment



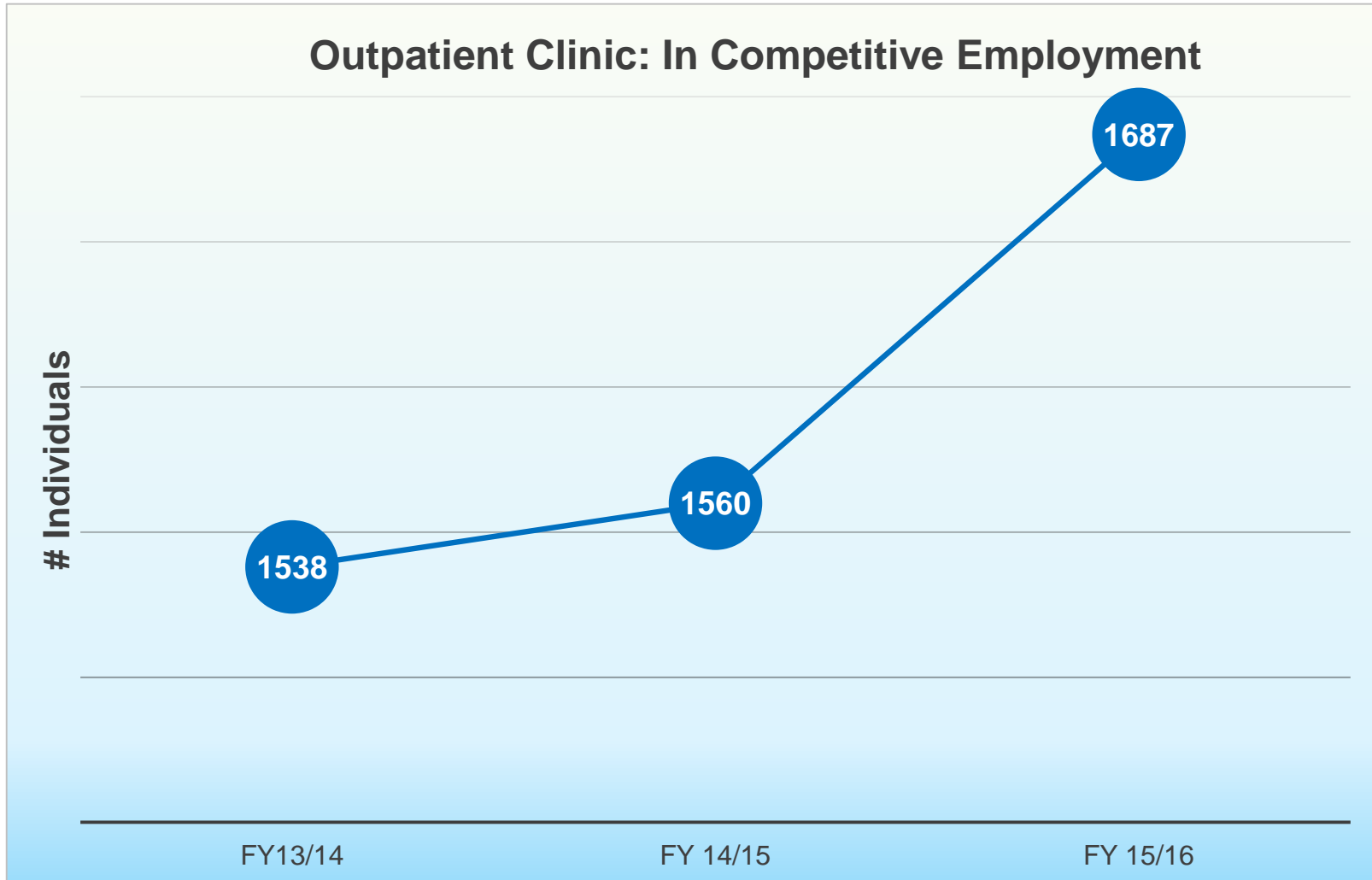
## Adult/Older Adult Clients: In Competitive Employment



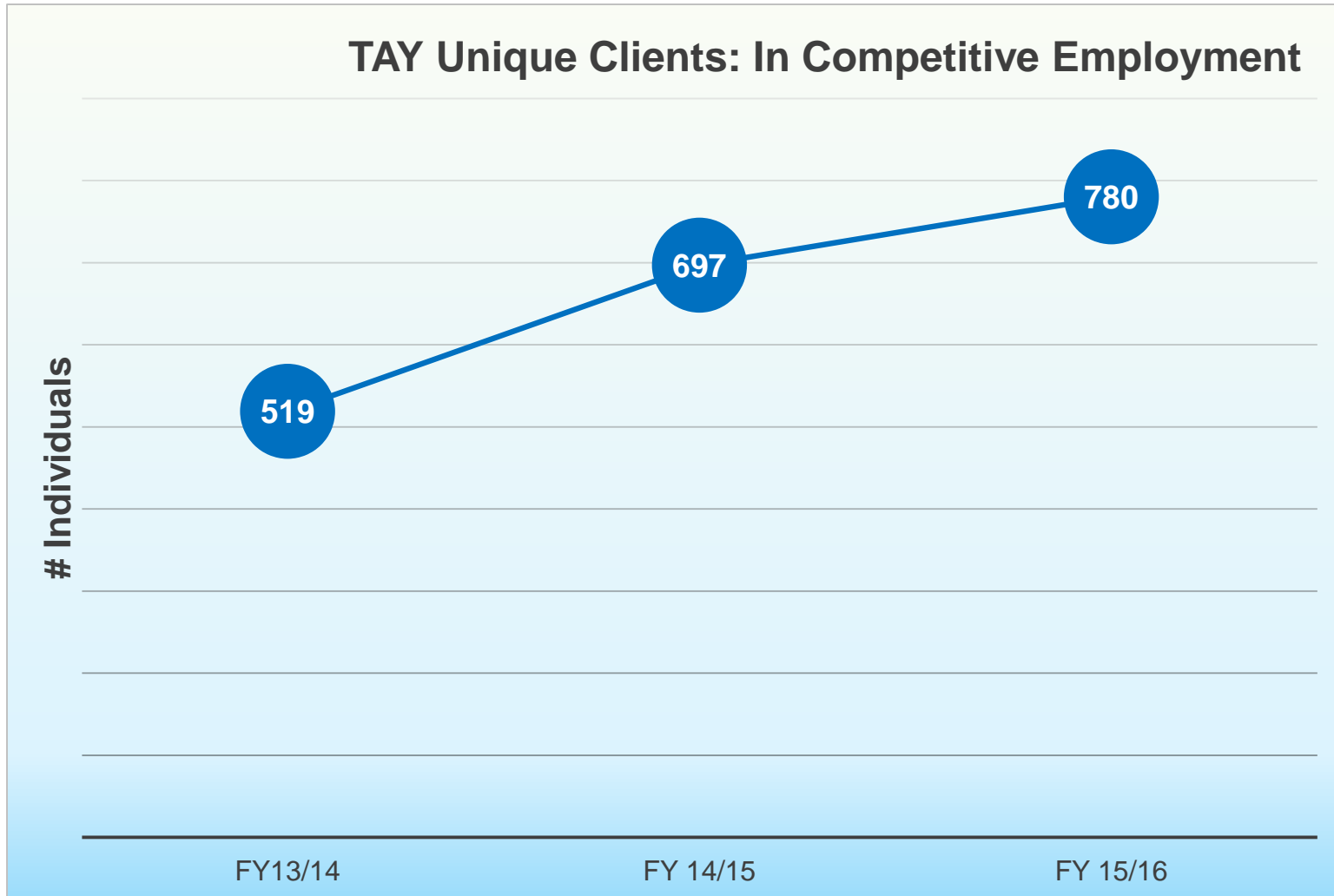
# Databook - Employment



# Databook - Employment



# Databook - Employment



# Work Well Initiative

WORK WELL INITIATIVE



Build Capacity through Training and Presentations

Increase opportunities for employment income, length of employment & job retention.

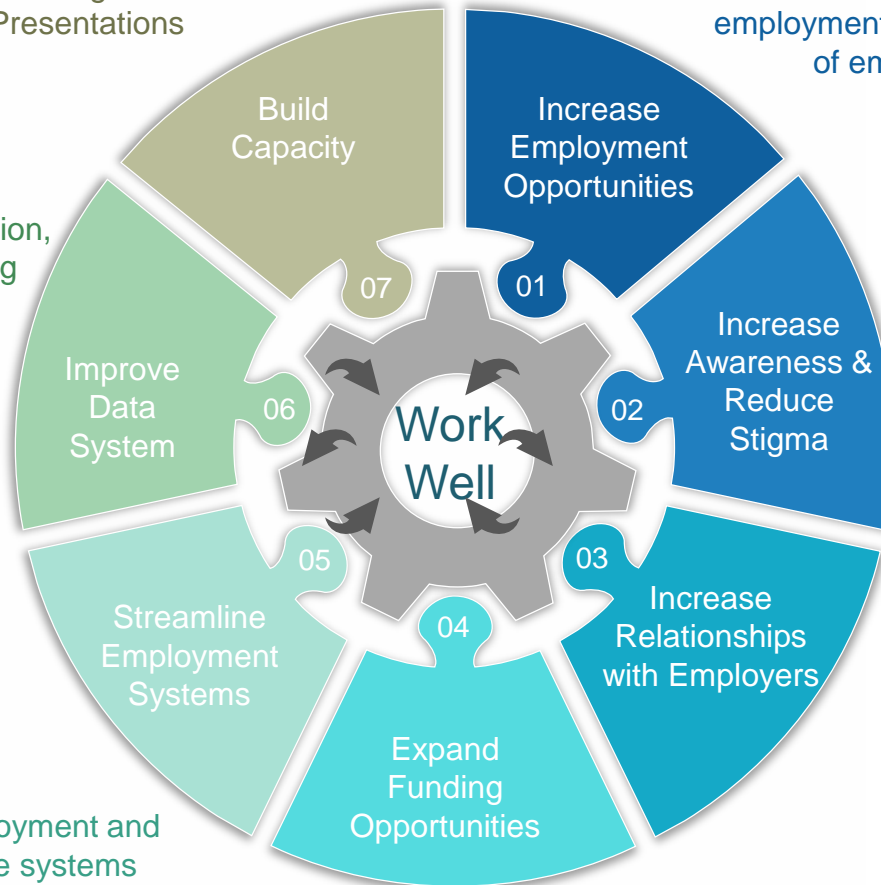
Improve data collection, analysis and reporting

Increase awareness of mental illness & related stigma in the workplace.

Streamline employment and supportive service systems

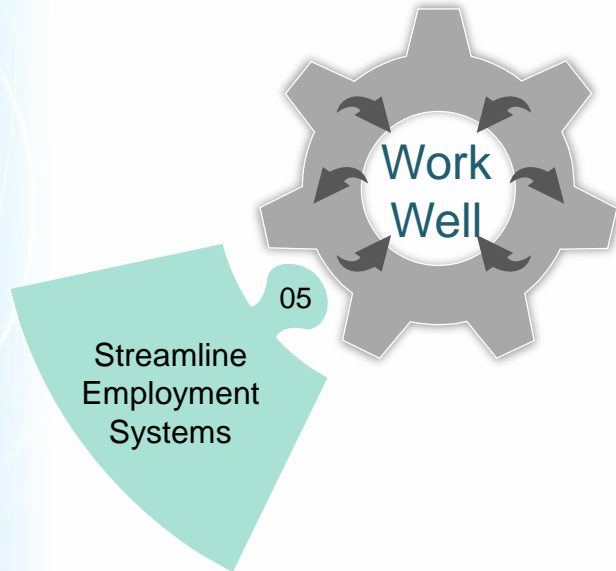
Increase and Enhance Relationships with employers, businesses, and social enterprise sectors

Identify & Increase funding opportunities





# Streamline Systems



Employment Resource Directory included in Strategic Employment Plan

2015 - Aligned Scope of Work Statements regarding Employment Activities within all Full Service Partnership BHS Contracts

2016- Aligned Scope of Work Statements regarding Employment Activities within all Clubhouse BHS Contracts

Fidelity reviews completed on all BHS Supported Employment programs

Future: Align with 211 San Diego's 360° Community Coordination to enhance tracking of employment referrals and outcomes





# Employment Specialist

- Located in FSP/ACT, Outpatient Clinic, Clubhouses, and Employment Programs
- Role includes job coach, job developer, soft skills/rehabilitation, and SE subject matter expert for team
- Part of team recovery services



# ES Development

- Quarterly Meeting-beginning February 2018
- Webinar trainings
- Implementation of Individual Placement and Support (IPS) Model
  - Performance scheduling
  - Revised outcome objectives
  - Increase in consumers employed
  - IPS Advisory Council (PMs)



# Toolkits

- Job Seeker
- Employer
- Located at:
  - San Diego Technical Resource Library  
[http://www.sandiegocounty.gov/content/sdc/hhsa/programs/bhs/technical\\_resource\\_library.html](http://www.sandiegocounty.gov/content/sdc/hhsa/programs/bhs/technical_resource_library.html)
  - MHSA Network of Care  
<http://www.sandiego.camhsa.org>



# Contact Information



Betsy Knight

619-584-5029

Elizabeth.Knight@sdcounty.ca.gov